

Spec. No.: DDPM-EN05-1.0  
Version: 1  
Total pages: 26  
Date: 2002-Sep-25

## AU OPTRONICS CORPORATION

### Product Specifications

#### 17.0" SXGA Color TFT-LCD Module

**Model Name: M170EN05**  
**V.1/V.3**

Approved by	Prepared by
James	Shaders

*DDBU Marketing Division / AU Optronics Corporation*

Official UK Representative



Unit A Merlin Centre, Gatehouse Close,  
Aylesbury, HP19 8DP, ENGLAND

Tel.: +44 (0)1296-469770      Fax.: +44 (0)1296-469779  
sales@displaze.com      www.displaze.com

Please verify this is the latest information. E&OE

## Product Specifications

**17.0" SXGA Color TFT-LCD Module**

**Model Name: M170EN05**

**V.1**

**( ) Preliminary Specifications**  
**(U) Final Specifications**

**Note: This Specification is subject to change without notice.**

Official UK Representative



Unit A Merlin Centre, Gatehouse Close,  
Aylesbury, HP19 8DP, ENGLAND

Tel.: +44 (0)1296-469770      Fax.: +44 (0)1296-469779  
sales@displaze.com      www.displaze.com

Please verify this is the latest information. E&OE

## **i Contents**

## **ii Record of Revision**

## **1.0 Handling Precautions**

## **2.0 General Description**

- 2.1 Display Characteristics
- 2.2 Functional Block Diagram
- 2.3 Optical Characteristics
- 2.4 Pixel format image

## **3.0 Electrical characteristics**

- 3.1 Absolute Maximum Ratings
- 3.2 Connectors
- 3.3 Signal Pin
- 3.4 Signal Description
- 3.5 Signal Electrical Characteristics
- 3.6 Interface Timing
  - 3.6.1 Timing Characteristics
  - 3.6.2 Timing Definition
- 3.7 Power Consumption
- 3.8 Power ON/OFF Sequence

## **4.0 Backlight Characteristics**

- 4.1 Signal for Lamp connector
- 4.2 Parameter guide line for CCFL Inverter

## **5.0 Vibration, shock and drop**

- 5.1 Vibration and shock
- 5.2 Drop test

## **6.0 Environment**

- 6.1 Temperature and humidity
  - 6.1.1 Operating conditions
  - 6.1.2 Shipping conditions
- 6.2 Atmospheric pressure
- 6.3 Thermal shock

## **7.0 Reliability**

- 7.1 Failure criteria
- 7.2 Failure rate
  - 7.2.1 Usage
  - 7.2.2 Components de-rating
- 7.3 CCFL life
- 7.4 ON/OFF cycle

## **8.0 Safety**

8.1 Sharp edge requirement

8.2 Material

8.2.1 Toxicity

8.2.2 Flammability

8.3 Capacitors

8.4 Hazardous voltage

## **9.0 Other requirements**

9.1 Smoke free design

9.2 National test lab requirement

## **10.0 Mechanical Characteristics**

## ii Record of Revision

Version and Date	Page	Old description	New Description	Remark
0.1 2002/01/07	All	First Edition for Customer	All	
0.2. 2002/01/30	6	Uniformity(5-pts): 85%(typ) ; 80%(min)	Uniformity(9-pts): 80%(typ) ; 75%(min)	Change
	8	n.a.	TCO99 luminance uniformity $\leq 1.7$	Add
	24	ME drawing	ME drawing	Update
0.3 2002/03/22	5	Color Chromaticity	Color Chromaticity	Add
0.4. 2002/04/08	17	Power ON/OFF Sequence	Power ON/OFF Sequence	Update
	24	ME drawing	ME drawing (hook position)	Update
	24	ME drawing	ME drawing (screw hole depth)	Update
0.5. 2002/05/03	6	Viewing angle	70/70/70/70 (CR=10) 80/80/80/80 (CR=5)	Update
	5	Brightness: 280nits(center)	Brightness: 260nits(center)	Update
	5	Raising Time: 11.5(typ) /18(max) Falling Time: 4.5(typ) /7(max)	Raising Time: 12(typ) /20(max) Falling Time: 4(typ) /5(max)	Update
	12	V front porch: 1(min); 1(typ)	V front porch: 2(min); 2(typ)	Update
	5	Green x: 0.28; Green y: 0.62	Green x: 0.29; Green y: 0.61	Update
0.6. 2002/7/20	24	Old label	New label	Update
	25,26	ME drawing	ME drawing(Bezel modify)	Update
	6	Weight: 1900g	Weight: 2000g	Update
	17	V front porch: 2(min); 2(typ)	V front porch: 1(min); 1(typ)	Update
	20	n.a.	CCFL Inrush current	Add
	8	Contrast: 400(typ)	Contrast: 450(typ)	Update
	8	Raising Time: 12(typ) / 20(max) Falling Time: 4(typ) / 5(max)	Raising Time: 4(typ) / 5(max) Falling Time: 12(typ) / 20(max)	Update
0.7 2002/9/18	6	Power consumption: 25W	Power consumption: 25W (typ)	Add
	8	n.a.	Test equipment setup	Add
	21	n.a.	Lamp soldering method	Add

## 1.0 Handling Precautions

- 1) Since front polarizer is easily damaged, pay attention not to scratch it.
- 2) Be sure to turn off power supply when inserting or disconnecting from input connector.
- 3) Wipe off water drop immediately. Long contact with water may cause discoloration or spots.
- 4) When the panel surface is soiled, wipe it with absorbent cotton or other soft cloth.
- 5) Since the panel is made of glass, it may break or crack if dropped or bumped on hard surface.
- 6) Since CMOS LSI is used in this module, take care of static electricity and insure human earth when handling.
- 7) Do not open nor modify the Module Assembly.
- 8) Do not press the reflector sheet at the back of the module to any directions.
- 9) At the insertion or removal of the Signal Interface Connector, be sure not to rotate nor tilt the Interface Connector of the TFT-LCD module.
- 10) After installation of the TFT-LCD module into an enclosure (LCD monitor housing, for example), do not twist nor bend the TFT -LCD module even momentary. At designing the enclosure, it should be taken into consideration that no bending/twisting forces are applied to the TFT -LCD module from outside. Otherwise the TFT -LCD module may be damaged.

## General Description

This specification applies to the 17.0 inch Color TFT-LCD Module M170EN05.

The display supports the SXGA (1280(H) x 1024(V)) screen format and 262k colors (RGB 6-bits data).

All input signals are 2 Channel LVDS interface compatible.

This module does not contain an inverter card for backlight.

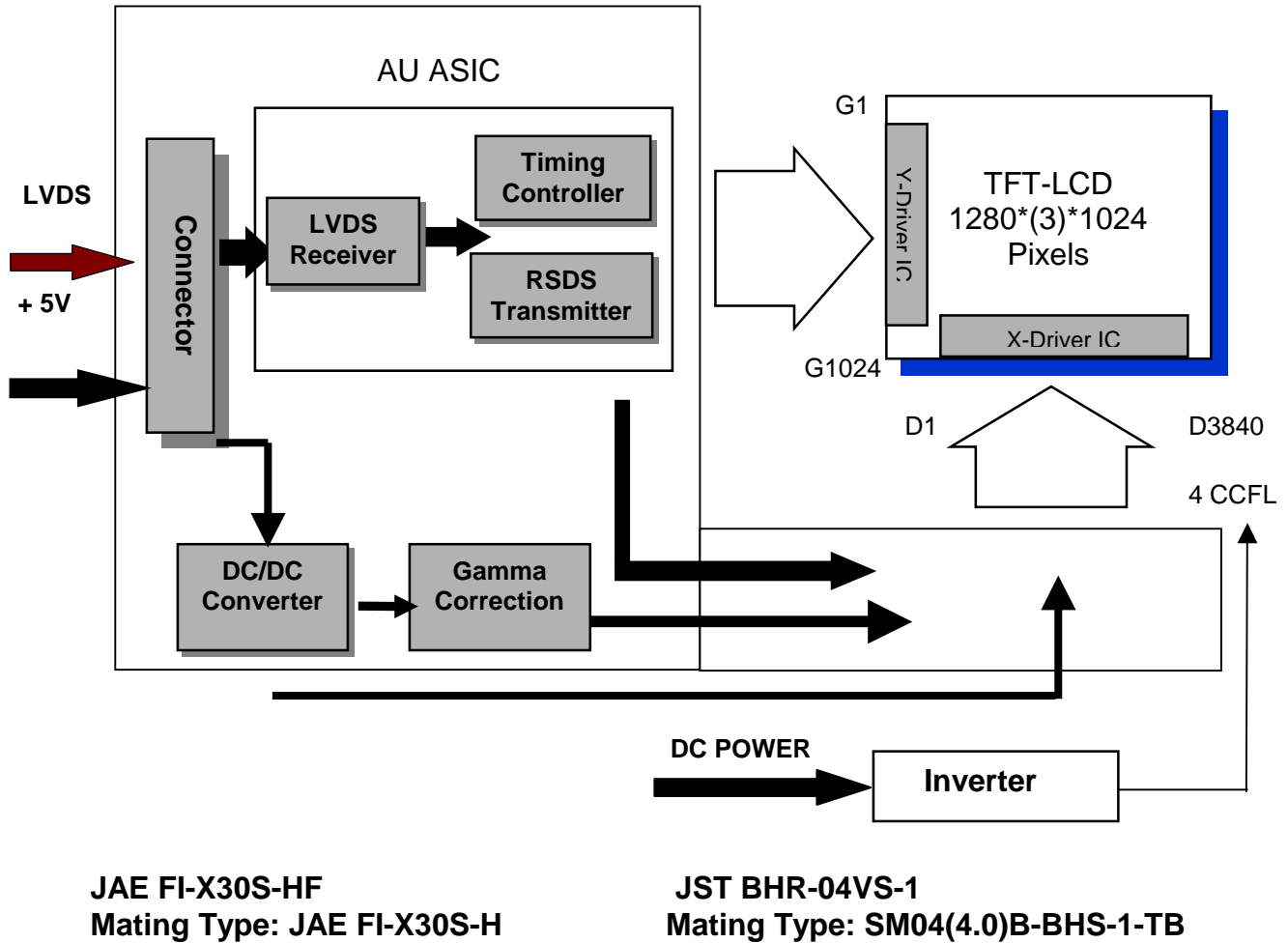
## 2.1 Display Characteristics

The following items are characteristics summary on the table under 25 °C condition:

ITEMS	Unit	SPECIFICATIONS
Screen Diagonal	[mm]	432(17.0")
Active Area	[mm]	337.920 (H) x 270.336(V)
Pixels H x V		1280(x3) x 1024
Pixel Pitch	[mm]	0.264 (per one triad) x 0.264
Pixel Arrangement		R.G.B. Vertical Stripe
Display Mode		Normally White
White Luminance	[cd/m <sup>2</sup> ]	260 (center) @ 7mA
Contrast Ratio		450 : 1 (Typ)
Optical Response Time	[msec]	16 (Typ)
Color Saturation		72% NTSC
Nominal Input Voltage VDD	[Volt]	+5.0 V
Power Consumption (VDD line + CCFL line)	[Watt]	25W (typ) (w/o Inverter, All black pattern)
Weight	[Grams]	2000 (Typ)
Physical Size	[mm]	358.5(W) x 296.5(H) x 19.0(D)
Electrical Interface		Even/Odd R/G/B data, 3 sync signal, Clock
Support Color		262k colors (RGB 6-bit data )
Temperature Range		
Operating	[°C]	0 to +50
Storage (Shipping)	[°C]	-20 to +60

## 2.2 Functional Block Diagram

The following diagram shows the functional block of the 17.0 inches Color TFT-LCD Module:



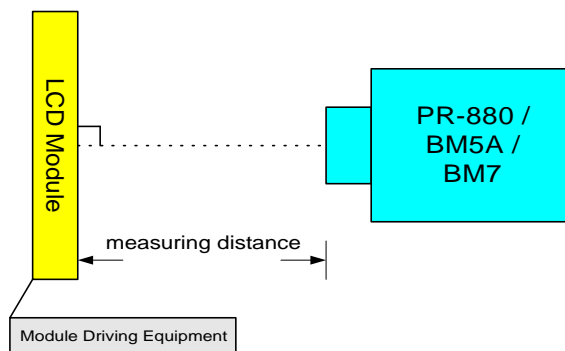


## 2.3 Optical Characteristics

The optical characteristics are measured under stable conditions at 25°C (Room Temperature) :

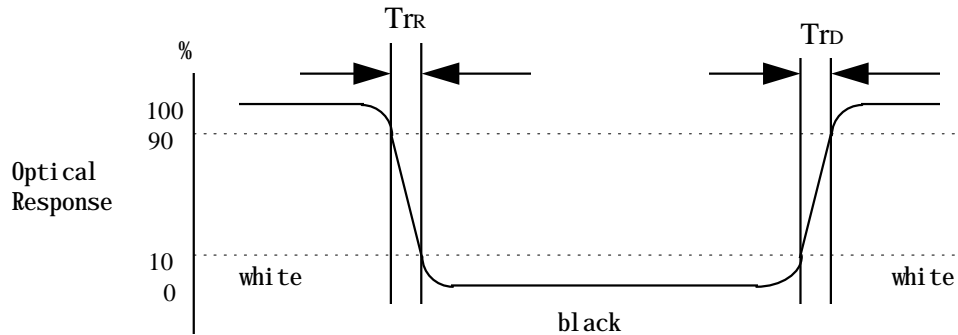
Item	Unit	Conditions	Min.	Typ.	Max.
Viewing Angle	[degree]	Horizontal (Right) CR = 10 (Left)	60 60	70 70	-
		Vertical (Up) CR = 10 (Down)	60 60	70 70	-
		Horizontal (Right) CR = 5 (Left)	70 70	80 80	-
		Vertical (Up) CR = 5 (Down)	70 70	80 80	-
Contrast ratio		Normal Direction	250	450	-
Response Time (Note 1)	[msec]	Raising Time	-	4	5
		Falling Time	-	12	20
		Raising + Falling	-	16	25
Color / Chromaticity Coordinates (CIE)		Red x	0.61	0.64	0.67
		Red y	0.31	0.34	0.37
		Green x	0.26	0.29	0.32
		Green y	0.58	0.61	0.64
		Blue x	0.11	0.14	0.17
		Blue y	0.04	0.07	0.10
Color Coordinates (CIE) White		White x	0.28	0.31	0.34
		White y	0.30	0.33	0.36
White Luminance @ CCFL 7.0mA (center)	[cd/m <sup>2</sup> ]		200	260	-
Luminance Uniformity (Note 2)	[%]		75	80	-
TCO99 1.5.2B luminance uniformity (Note 3)					1.7
Crosstalk (in 75Hz) (Note 4)	[%]				1.5

Equipment      Pattern Generator, Power Supply, Digital Voltmeter, Luminance meter (PR 880, BM-5A)  
Aperture        1° with 100cm VD or 2° with 50cm viewing distance  
Test Point      Center (ISO point 22)  
Environment    < 1 lux

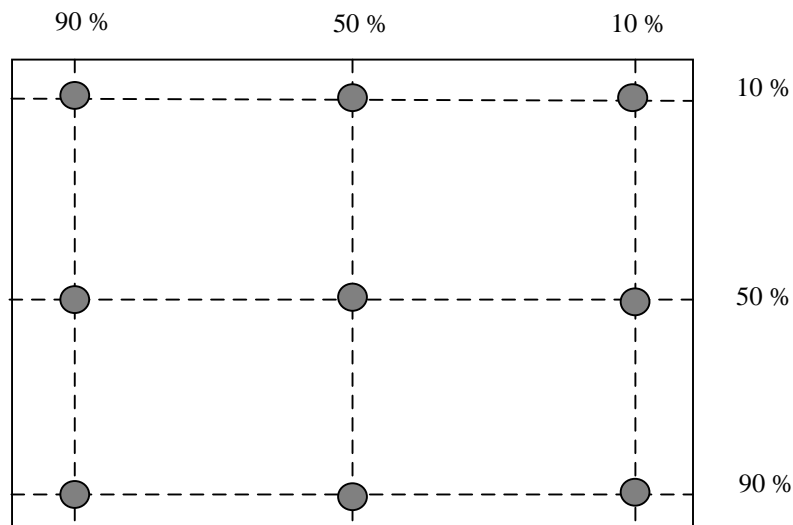


Note 1: Definition of Response time:

The output signals of photodetector are measured when the input signals are changed from “Black” to “White” (falling time), and from “White” to “Black” (rising time), respectively. The response time is interval between the 10% and 90% of amplitudes.



Note 2: Brightness uniformity of these 9 points is defined as below:



$$\text{Uniformity} = \frac{\text{Minimum Luminance in 9 Points (1-9)}}{\text{Maximum Luminance in 9 Points (1-9)}}$$

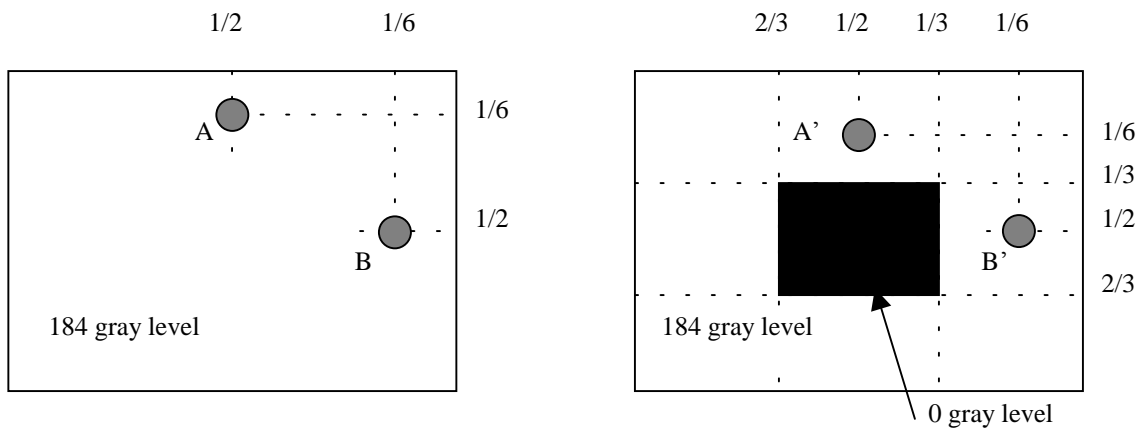
Note 3: TCO '99 Certification Requirements and test methods for environmental labeling of Display Report No. 2 defines Luminance uniformity as below:

$$((L_{\text{max},+30\text{deg.}} / L_{\text{min},+30\text{deg.}}) + (L_{\text{max},-30\text{deg.}} / L_{\text{min},-30\text{deg.}})) / 2$$

This panel is compatible with TCO99 approbation in luminance uniformity  $\leq 1.7$ , luminance contrast  $> 0.5$

AU Optronics Corp.

Note 4:



Unit: percentage of dimension of display area

$$|L_A - L_B| / L_A \times 100\% = 1.5\% \text{ max.}, L_A \text{ and } L_B \text{ are brightness at location A and B}$$

$$|L_{B'} - L_B| / L_B \times 100\% = 1.5\% \text{ max.}, L_{A'} \text{ and } L_{B'} \text{ are brightness at location A' and B'}$$

## 2.4: Pixel format image

Following figure shows the relationship of the input signals and LCD pixel format.

	1			2									1279			1280		
1st Line	R	G	B	R	G	B	· · · · ·						R	G	B	R	G	B
	·			·			·						·			·		
	·			·			·						·			·		
	·			·			·						·			·		
	·			·			·						·			·		
	·			·			·						·			·		
	·			·			·						·			·		
	·			·			·						·			·		
	·			·			·						·			·		
	·			·			·						·			·		
	·			·			·						·			·		
1024th	R	G	B	R	G	B	· · · · ·						R	G	B	R	G	B

### 3.0 Electrical characteristics

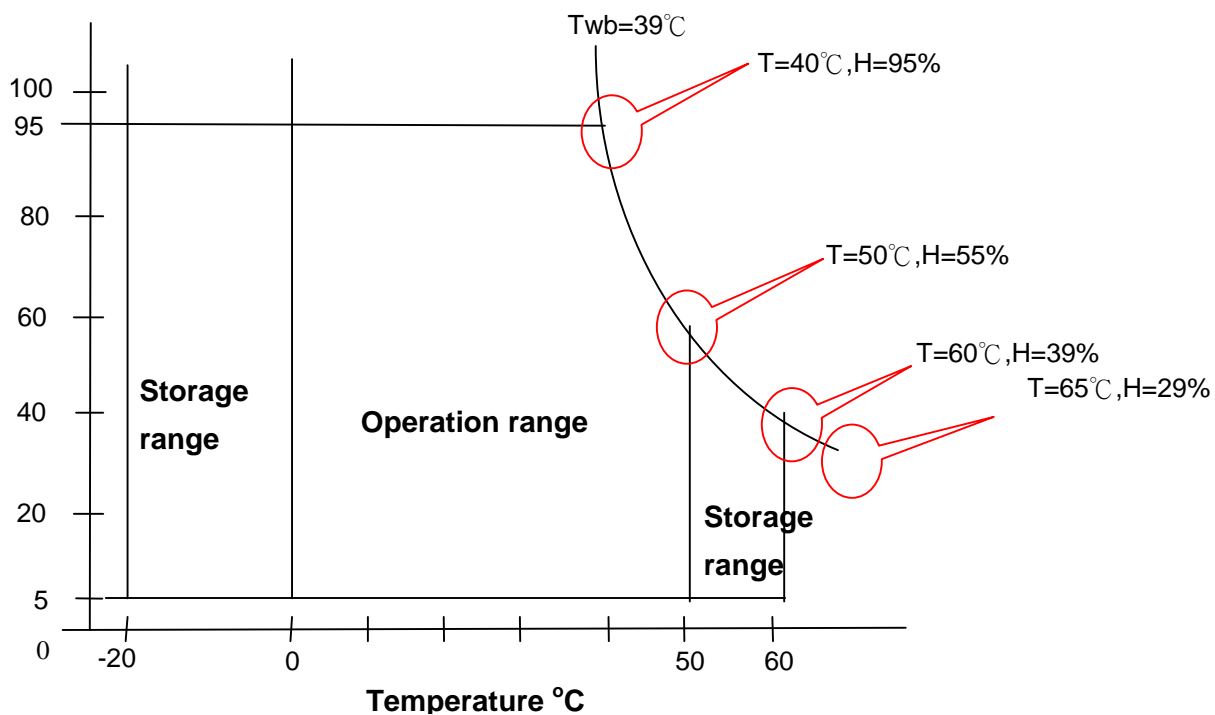
#### 3.1 Absolute Maximum Ratings

Absolute maximum ratings of the module is as following:

Item	Symbol	Min	Max	Unit	Conditions
Logic/LCD Drive Voltage	VIN	-0.3	+5.5	[Volt]	
Select LVDS data order	SELLVDS	NC	NC	[Volt]	
CCFL Inrush current	ICFLL	-	38	[mA]	
CCFL Current	ICFL	-	7.6	[mA] rms	
Operating Temperature	TOP	0	+50	[°C]	Note 1
Operating Humidity	HOP	8	95	[%RH]	Note 1
Storage Temperature	TST	-20	+60	[°C]	Note 1
Storage Humidity	HST	8	95	[%RH]	Note 1

**Note 1 : Maximum Wet-Bulb should be 39°C and No condensation.**

**Relative Humidity %**



### 3.2 Connectors

Physical interface is described as for the connector on module.

These connectors are capable of accommodating the following signals and will be following components.

<b>Connector Name / Designation</b>	Interface Connector / Interface card
<b>Manufacturer</b>	JAE or compatible
<b>Type Part Number</b>	FI-X30S-HF
<b>Mating Housing Part Number</b>	FI-X30S-H

<b>Connector Name / Designation</b>	Lamp Connector / Backlight lamp
<b>Manufacturer</b>	JST
<b>Type Part Number</b>	BHR-04VS-1
<b>Mating Type Part Number</b>	SM04(4.0)B-BHS-1-TB

### 3.3 Signal Pin

Pin#	Signal Name	Pin#	Signal Name
1	RxO0-	2	RxO0+
3	RxO1-	4	RxO1+
5	RxO2-	6	RxO2+
7	GND	8	RxOC-
9	RxOC+	10	RxO3-
11	RxO3+	12	RxE0-
13	RxE0+	14	GND
15	RxE1-	16	RxE1+
17	GND	18	RxE2-
19	RxE2+	20	RxEC-
21	RxEC+	22	RxE3-
23	RxE3+	24	GND
25	NC	26	NC
27	NC	28	Power
29	Power	30	Power

### 3.4 Signal Description

The module using a pair of LVDS receiver SN75LVDS82 (Texas Instruments) or compatible. LVDS is a differential signal technology for LCD interface and high speed data transfer device. Transmitter shall be SN75LVDS83(negative edge sampling) or compatible. The first LVDS port(RxOxxx) transmits odd pixels while the second LVDS port(RxExxx) transmits even pixels.

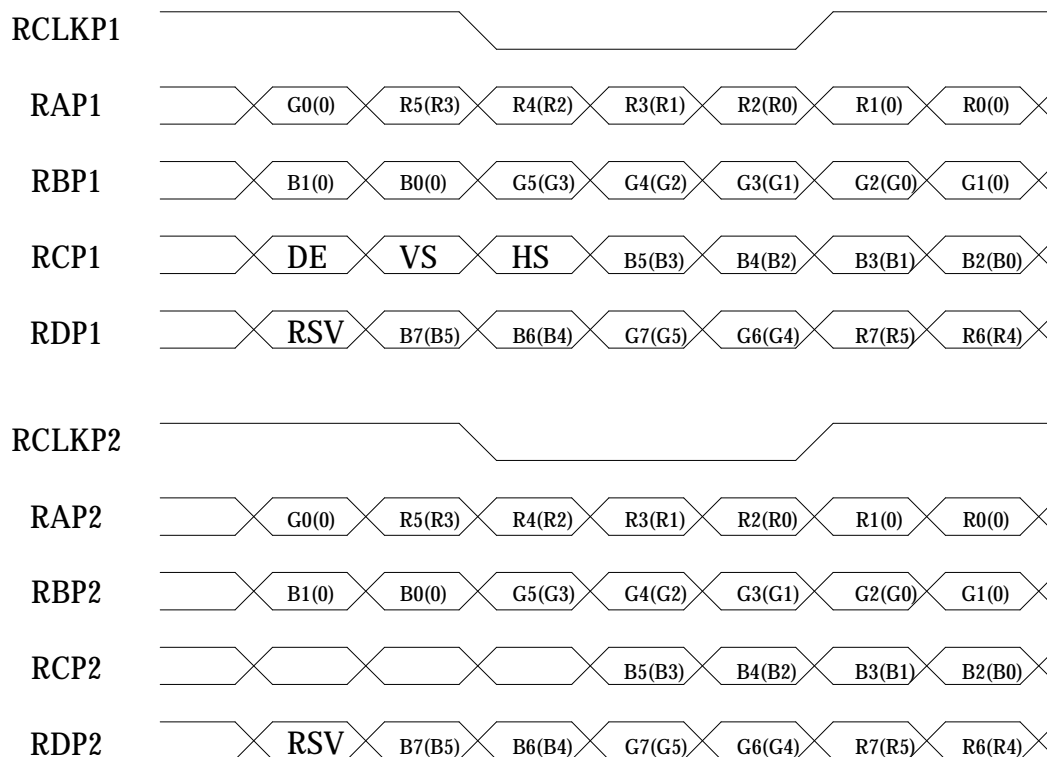
PIN #	SIGNAL NAME	DESCRIPTION
1	RxO0-	Negative LVDS differential data input (Odd data)
2	RxO0+	Positive LVDS differential data input (Odd data)
3	RxO1-	Negative LVDS differential data input (Odd data)
4	RxO1+	Positive LVDS differential data input (Odd data)
5	RxO2-	Negative LVDS differential data input (Odd data, H-Sync,V-Sync,DSPTMG)
6	RxO2+	Positive LVDS differential data input (Odd data, H-Sync,V-Sync,DSPTMG)
7	GND	Power Ground
8	RxOC-	Negative LVDS differential clock input (Odd clock)
9	RxOC+	Positive LVDS differential clock input (Odd clock)
10	RxO3-	Negative LVDS differential data input (Odd data)
11	RxO3+	Positive LVDS differential data input (Odd data)
12	RxE0-	Negative LVDS differential data input (Even clock)
13	RxE0+	Positive LVDS differential data input (Even data)
14	GND	Power Ground
15	RxE1-	Positive LVDS differential data input (Even data)
16	RxE1+	Negative LVDS differential data input (Even data)
17	GND	Power Ground
18	RxE2-	Negative LVDS differential data input (Even data)
19	RxE2+	Positive LVDS differential data input (Even data)
20	RxEC-	Negative LVDS differential clock input (Even clock)
21	RxEC+	Positive LVDS differential clock input (Even clock)
22	RxE3-	Negative LVDS differential data input (Even data)
23	RxE3+	Positive LVDS differential data input (Even data)
24	GND	Power Ground
25	NC	-
26	NC	-
27	NC	-
28	POWER	Power
29	POWER	Power
30	POWER	Power

**Note:** Input signals of odd and even clock shall be the same timing.

LVDS DATA Name	Description
DSP	Display Timing: When the signal is high, the pixel data shall be valid to be displayed
V-S	Vertical Sync: Both Positive and Negative polarity are acceptable
H-S	Horizontal Sync: Both Positive and Negative polarity are acceptable

<b>TI LVDS X'mitter SN75LVDS83</b>	<b>Module LVDS signal (interface connector pin7)</b>
<b>Signal Name</b>	<b>Low(open)</b>
D0	Red0
D1	Red1
D2	Red2
D3	Red3
D4	Red4
D5	Red7
D6	Red5
D7	Green0
D8	Green1
D9	Green2
D10	Green6
D11	Green7
D12	Green3
D13	Green4
D14	Green5
D15	Blue0
D16	Blue6
D17	Blue7
D18	Blue1
D19	Blue2
D20	Blue3
D21	Blue4
D22	Blue5
D23	NA
D24	H Sync
D25	V Sync
D26	Display Timing
D27	Red6

**8bits input: M170EN05 only catch bit 2 to bit 7 for 6 bit display**  
**6bits input data format marked with ( ).**

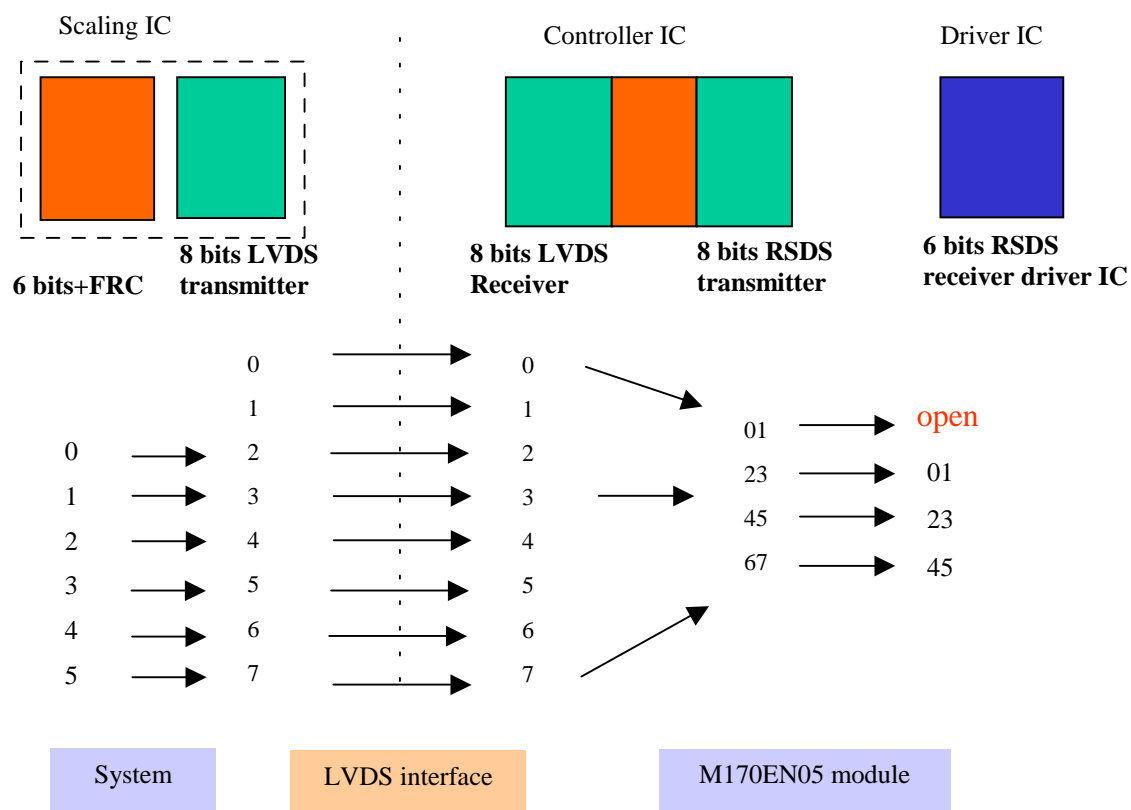


**Note: R/G/B data 7:MSB, R/G/B data 0:LSB**

O = "First Pixel Data"

E = "Second Pixel Data"





### 3.5 Signal Electrical Characteristics

Input signals shall be low or Hi-Z state when Vin is off

It is recommended to refer the specifications of SN75LVDS82DGG (Texas Instruments) in detail.

Each signal characteristics are as follows;

Parameter	Condition	Min	Max	Unit
Vth	Differential Input High Voltage(Vcm=+1.2V)		100	[mV]
Vtl	Differential Input Low Voltage(Vcm=+1.2V)	-100		[mV]

### 3.6 Interface Timings

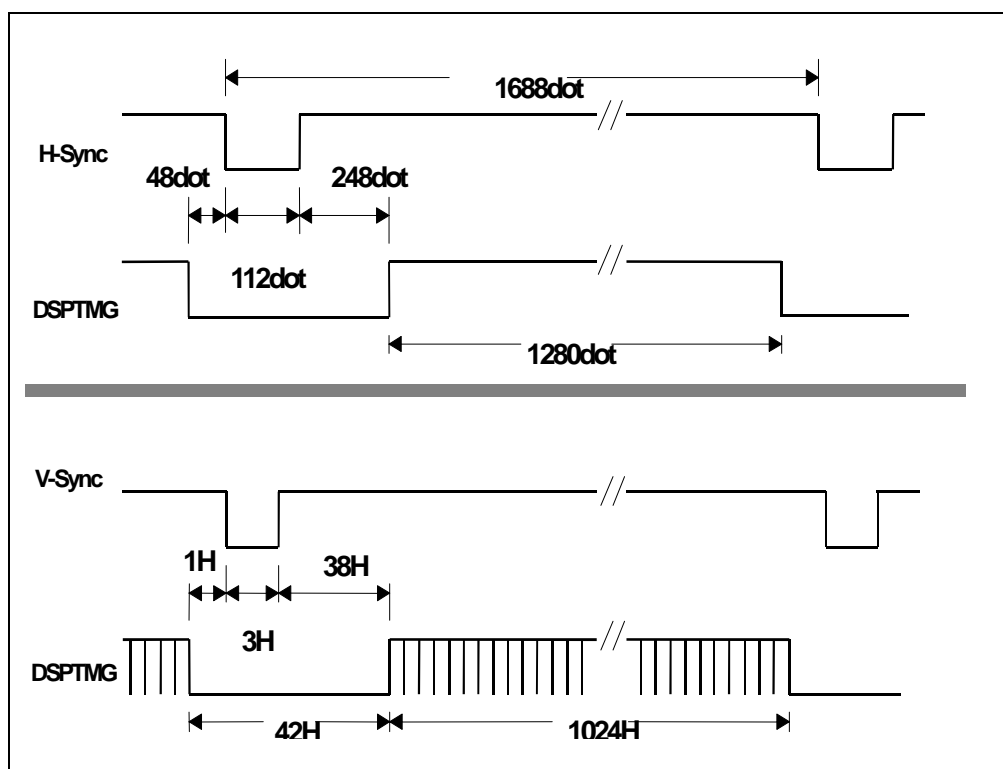
Basically, interface timings described here is not actual input timing of LCD module but output timing of SN75LVDS82DGG (Texas Instruments) or equivalent.

#### 3.6.1 Timing Characteristics

Signal	Item	Symbol	MIN	TYP	MAX	Unit
DTCLK	Freq.	Fdck	50	67.5	70	MHz
DTCLK	Cycle	Tck	14.2	14.8	20	ns
+V-Sync	Frame Rate	1/Tv	56.25	75	77	Hz
+V-Sync	Cycle	Tv	13	13.33	17.78	ms
+V-Sync	Cycle	Tv	1035	1066	2047	lines
+V-Sync	Active level	Tva	3	3		lines
+V-Sync	V-back porch	Tvb	7	38	63	lines
+V-Sync	V-front porch	Tvf	1	1		lines
+DSPTMG	V-Line	m	-	1024	-	lines
+H-Sync	Scan rate	1/Th	-	80.06	-	KHz
+H-Sync	Cycle	Th	800	844	1023	Tck
+H-Sync	Active level	Tha (*1)	4	56		Tck
+H-Sync	Back porch	Thb (*1)	4	124		Tck
+H-Sync	Front porch	Thf	4	24		Tck
+DSPTMG	Display Pixels	n	-	640	-	Tck

**Note:** Typical value refer to VESA STANDARD (\*1) Tha+Thb should be less than 1024 Tck.

### 3.6.2 Timing Definition



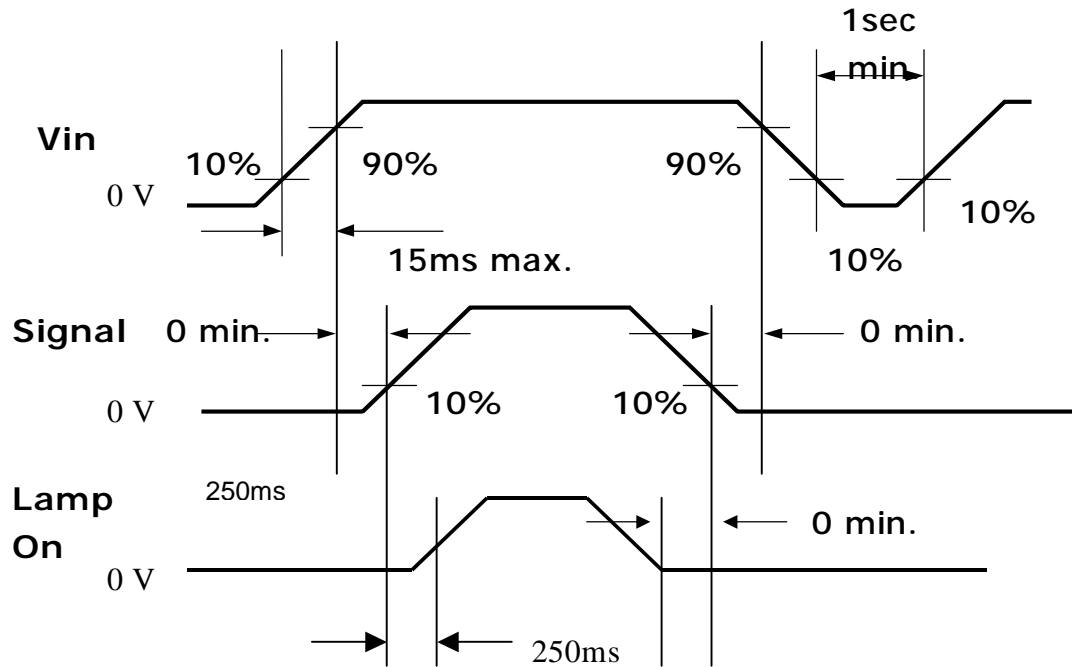
### 3.7 Power Consumption

Input power specifications are as follows;

Symbol	Parameter	Min	Typ	Max	Units	Condition
VDD	Logic/LCD Drive Voltage	4.5	5	5.5	[Volt]	
IDD	VDD current		950	1200	[mA]	
PDD	VDD Power		4.75	6.6	[Watt]	Vin=5V, All Black Pattern
VDDrp	Allowable Logic/LCD Drive Ripple Voltage			100	[mV] p-p	
VDDns	Allowable Logic/LCD Drive Ripple Noise			100	[mV] p-p	

### 3.8 Power ON/OFF Sequence

Vin power and lamp on/off sequence is as follows. Interface signals are also shown in the chart. Signals from any system shall be Hi-Z state or low level when Vin is off.



## 4.0 Backlight Characteristics

### 4.1 Signal for Lamp connector

Pin #	Signal Name
1	Lamp High Voltage
2	Lamp High Voltage
3	No Connection
4	Ground

## 4.2 Parameter guideline for CFL Inverter

Symbol	Parameter	Min	Typ	Max	Units	Condition
(L63)	White Luminance	200	260	-	[cd/m <sup>2</sup> ]	(Ta=25°C)
ISCFL	CCFL standard current	6.5	7.0	7.5	[mA] rms	(Ta=25°C)
IRCFL	CCFL operation range	3.0	7.0	7.5	[mA] rms	(Ta=25°C)
ICFL	CCFL Inrush current	-	26	34	[mA]	Note 1
fCFL	CCFL Frequency	40	50	80	[KHz]	(Ta=25°C) Note 2
ViCFL (0°C)	CCFL Ignition Voltage	1700			[Volt] rms	(Ta=0°C) Note 3
ViCFL (25°C)	CCFL Ignition Voltage	1200			[Volt] rms	(Ta=25°C) Note 3
TCFL	CCFL Dark start time			1.0	sec	(Ta=25°C)
VCFL	CCFL Discharge Voltage (Reference)		700	860	[Volt] rms	(Ta=25°C) Note 4
PCFL	CCFL Power consumption		19.6	25.8	[Watt]	(Ta=25°C) Note 4

Note 1: Duration=50 [msec]

Note 2: CCFL Frequency should be carefully determined to avoid interference between inverter and TFT LCD

Note 3: CCFL inverter should be able to give out a power that has a generating capacity of over 1700 voltage.  
Lamp units need 1700 voltage minimum for ignition

Note 4: Calculator value for reference (ICFL×VCFL=PCFL)

Note 5: Lamp soldering method is required to use "Hook Soldering".

## 5.0 Vibration, Shock, and Drop

### 5.1 Vibration & Shock

Frequency: 10 - 200Hz  
 Sweep: 30 Minutes each Axis (X, Y, Z)  
 Acceleration: 1.5G(10~200Hz P- P)  
 Test method:

<b>Acceleration (G)</b>	1.5
<b>Frequency (Hz)</b>	10~200~10
<b>Active time(min)</b>	30

### 5.2 Shock Test Spec:

<b>Acceleration (G)</b>	50
<b>Active time</b>	20
<b>Wave form</b>	half-sin
<b>Times</b>	1

Direction:  $\pm X$  ,  $\pm Y$ ,  $\pm Z$

### 5.3 Drop test

Package test: The drop height is 60 cm.

## 6.0 Environment

The display module will meet the provision of this specification during operating condition or after storage or shipment condition specified below. Operation at 10% beyond the specified range will not cause physical damage to the unit.

### 6.1 Temperature and Humidity

#### 6.1.1 Operating Conditions

The display module operates error free, when operated under the following conditions;

Temperature 0 °C to 50 °C  
 Relative Humidity 8% to 95%  
 Wet Bulb Temperature 39.0 °C

### 6.1.2 Shipping Conditions

The display module operates error free, after the following conditions;

Temperature	-20 °C to 60 °C
Relative Humidity	8% to 95%
Wet Bulb Temperature	39.0 °C

### 6.2 Atmospheric Pressure

The display assembly is capable of being operated without affecting its operations over the pressure range as following specified;

	Pressure	Note
Maximum Pressure	1040hPa	0m = sea level
Minimum Pressure	674hPa	3048m = 10.000 feet

Note : Non-operation attitude limit of this display module = 30,000 feet. = 9145 m.

### 6.3 Thermal Shock

The display module will not sustain damage after being subjected to 100 cycles of rapid temperature change. A cycle of rapid temperature change consists of varying the temperature from -20°C to 60°C, and back again.

<b>Thermal shock cycle</b>	-20 °C for 30min 60 °C for 30min
----------------------------	-------------------------------------

Power is not applied during the test. After temperature cycling, the unit is placed in normal room ambient for at least 4 hours before powering on.

## 7.0 Reliability

This display module and the packaging of that will comply following standards.

### 7.1 Failure Criteria

The display assembly will be considered as failing unit when it no longer meets any of the requirements stated in this specification. Only as for maximum white luminance, following criteria is applicable.

**Note : Maximum white Luminance shall be 115 cd/m<sup>2</sup> or more.**

### 7.2 Failure Rate

The average failure rate of the display module (from first power-on cycle till 1,000 hours later) will not exceed 1.0%.  
The average failure rate of the display module from 1,000 hours until 16,000 hours will not exceed 0.7% per 1000 hours.

### 7.2.1 Usage

The assumed usage for the above criteria is:

- 220 power-on hours per month
- 500 power on/off cycles per month
- Maximum brightness setting
- Operation to be within office environment (25°C typical)

### 7.2.2 Component De-rating

All the components used in this device will be checked the load condition to meet the failure rate criteria.

### 7.3 CCFL Life

The assumed CCFL Life will be longer than 30,000 hours, typical value is 40,000 hours under stable condition at 25 ± 5°C;

Standard current at 7.0 ± 0.5mA.

Definition of life: brightness becomes 50% or less than the minimum luminance value of CCFL.

### 7.4 ON/OFF Cycle

The display module will be capable of being operated over the following ON/OFF Cycles.

ON/OFF	Value	Cycles
+Vin and CCFL power	30,000	10 seconds on / 10 seconds off

## 8.0 Safety

### 8.1 Sharp Edge Requirements

There will be no sharp edges or comers on the display assembly that could cause injury.

### 8.2 Materials

#### 8.2.1 Toxicity

There will be no carcinogenic materials used anywhere in the display module. If toxic materials are used, they will be reviewed and approved by the responsible AU Toxicologist.

#### 8.2.2 Flammability

All components including electrical components that do not meet the flammability grade UL94-V1 in the module will complete the flammability rating exception approval process. The printed circuit board will be made from material rated 94-V1 or better. The actual UL flammability rating will be printed on the printed circuit board.



### 8.3 Capacitors

If any polarized capacitors are used in the display assembly, provisions will be made to keep them from being inserted backwards.

### 8.4 Hazardous Voltages

Any point exceeding 42.4 volts meets the requirement of the limited current circuit. The current through a  $2K\Omega$  resistance is less than  $0.7 \times f$  (kHz) mA.

## 9.0 Other requirements

### 9.1 National Test Lab Requirement

The display module will satisfy all requirements for compliance to

**UL 1950, First Edition**

**CSA C22.2 No.950-M89**

**EEC 950**

**EN 60 950**

U.S.A. Information Technology Equipment


Canada, Information Technology Equipment

International, Information Technology Equipment

International, Information Processing Equipment  
(European Norm for IEC950)

### 9.2 Label

#### 9.2.1 Product label

		Model No: M170EN05 V.1 AU Optronics	02/09 MADE IN TAIWAN XXXXX	
MM1XXXXXXXXXX-XXXXX				
Sample :		RA Guarantee		
				
XXXXXXXXXXXXXXXXXXXXXXXX				

**NOTES:**

- 1 BACKLIGHT: 4 COLD CATHODE FLUORESCENT LAMPS
- 2 I/F CONNECTOR : JAE FI-X30S-HF
- 3 THIS DIMENSION EXCLUDES DEFORMATION
- 4 TOLERANCE WITHOUT SPECIFIED TO BE 0.5 MM
- 5 LAMP CABLE CONNECTOR TO BE JST BHR-04VS-1
- 6 TORQUE OF M3 USER HOLE SHOULD BE WITHIN 4 KGF-cm AND RE-SCREW 10 TIMES.

**SECTION A-A SCALE 4.000**

**SECTION B-B SCALE 4.000**

**SCALE 1.000**

**REVISIONS:**

REV	CON NO	DESCRIPTION	DATE
1	1	INITIAL	2003/10/15
2	2	REVISION	2003/10/15

**GENERAL INFORMATION:**

ITEM	DESCRIPTION	VALUE
1	GENERAL TOLERANCE	0.5
2	POSITIONAL TOLERANCE	0.5
3	FORM TOLERANCE	0.5
4	PERFECT INFORMATION	97.17M09.100
5	DATE	2003/10/15
6	DESIGNER	AL
7	CHECKER	AL
8	DATE	2003/10/15
9	DESIGNER	AL
10	CHECKER	AL
11	DATE	2003/10/15
12	DESIGNER	AL
13	CHECKER	AL
14	DATE	2003/10/15
15	DESIGNER	AL
16	CHECKER	AL
17	DATE	2003/10/15
18	DESIGNER	AL
19	CHECKER	AL
20	DATE	2003/10/15
21	DESIGNER	AL
22	CHECKER	AL
23	DATE	2003/10/15
24	DESIGNER	AL
25	CHECKER	AL
26	DATE	2003/10/15
27	DESIGNER	AL
28	CHECKER	AL
29	DATE	2003/10/15
30	DESIGNER	AL
31	CHECKER	AL
32	DATE	2003/10/15
33	DESIGNER	AL
34	CHECKER	AL
35	DATE	2003/10/15
36	DESIGNER	AL
37	CHECKER	AL
38	DATE	2003/10/15
39	DESIGNER	AL
40	CHECKER	AL
41	DATE	2003/10/15
42	DESIGNER	AL
43	CHECKER	AL
44	DATE	2003/10/15
45	DESIGNER	AL
46	CHECKER	AL
47	DATE	2003/10/15
48	DESIGNER	AL
49	CHECKER	AL
50	DATE	2003/10/15
51	DESIGNER	AL
52	CHECKER	AL
53	DATE	2003/10/15
54	DESIGNER	AL
55	CHECKER	AL
56	DATE	2003/10/15
57	DESIGNER	AL
58	CHECKER	AL
59	DATE	2003/10/15
60	DESIGNER	AL
61	CHECKER	AL
62	DATE	2003/10/15
63	DESIGNER	AL
64	CHECKER	AL
65	DATE	2003/10/15
66	DESIGNER	AL
67	CHECKER	AL
68	DATE	2003/10/15
69	DESIGNER	AL
70	CHECKER	AL
71	DATE	2003/10/15
72	DESIGNER	AL
73	CHECKER	AL
74	DATE	2003/10/15
75	DESIGNER	AL
76	CHECKER	AL
77	DATE	2003/10/15
78	DESIGNER	AL
79	CHECKER	AL
80	DATE	2003/10/15
81	DESIGNER	AL
82	CHECKER	AL
83	DATE	2003/10/15
84	DESIGNER	AL
85	CHECKER	AL
86	DATE	2003/10/15
87	DESIGNER	AL
88	CHECKER	AL
89	DATE	2003/10/15
90	DESIGNER	AL
91	CHECKER	AL
92	DATE	2003/10/15
93	DESIGNER	AL
94	CHECKER	AL
95	DATE	2003/10/15
96	DESIGNER	AL
97	CHECKER	AL
98	DATE	2003/10/15
99	DESIGNER	AL
100	CHECKER	AL

